

Optional Items



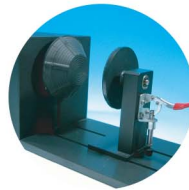
SmartBOX™ Cutting Accessory



Air Compressor Unit



External Control Interface Board



Rotary Attachment



SmartAIR Nozzle



Air Extraction System



SmartGUARD™ Fire Alarm



Roll to Roll Autofeeder



Laser Engraver

GCC LaserPro Spirit

Ingenious and Versatile Designs

| Specification | | Spirit |
|------------------------------------|------------------|---|
| Work Area | | 25 x 18 in. (640 x 460 mm) Extendable to 29 x 18 in. (740 x 460 mm) |
| Max. Part Size (W x L x H) | All doors closed | 30 x 19 x 6.5 in. (762 x 482.6 x 165 mm) |
| | All doors open | 30 x ∞ x 6.5 in. (762 x ∞ x 165 mm) |
| Table Size | | 31.1 x 20.9 in. (790 x 530 mm) |
| Dimensions | | 44.3 x 28.3 x 39.6 in. (1125 x 720 x 1005 mm) |
| Laser Source | | 12 to 100W 10.6-μm sealed CO ₂ Laser / 20W & 60W 9.3-μm sealed CO ₂ Laser |
| Cooling | | Air-cooled, Operating environment temperature 15°- 30°C (60°- 86°F) |
| Drive | | Closed-loop DC Servo Control |
| Throughput* | | 245.5 in ² / hr (1584 cm ² / hr) |
| Throughput* with SmartACT™ Enabled | | 283.4 in ² / hr (1828.8 cm ² / hr) |
| Speed Control | | Adjustable from 0.1-100% of 60 ips (Up to 16 color-linked speed settings per job) |
| Power Control | | Adjustable from 1-100% (Up to 16 color-linked power settings per job) |
| Engraving Capability | | 256-level gray scale image processing capability |
| Distance Accuracy | | 0.254 mm or 0.1% of move, whichever is greater |
| Z-Axis Movement | | Automatic |
| Focus Lens | | Standard 2.0", optional 1.5", 2.5", & 4.0" available |
| Resolution (DPI) | | Available 125, 250, 300, 380, 500, 600, 760, 1000, 1500 |
| Computer Interface | | 10 Base-T Ethernet, Full speed 2.0 USB |
| Compatible Operating Systems | | MS Windows |
| Display Panel | | 4-line LCD display showing current file name, total working time, laser power, engraving speed, file(s) loaded into memory buffer, setup and diagnostic menus |
| Safety | | Class I Laser Product Compliant with EN60825, Class II Laser Product Compliant with CDRH 2006/42/EC Machinery Directive Compliance |
| Operation Voltage | | Below 80Watt, 100-240V AC Auto Switching; 80Watt and above, 200-240V AC Auto Switching |
| Power Consumption | | 700W - 3300W |
| Air Exhaust System | | External exhaust system is required, one 4" connection on the back of the machine |

* Speed does not equal to throughput. See dealer or visit www.GCCworld.com for more details.
 Δ Specifications are subject to change without prior notice.

Authorized Dealer



www.GCCworld.com



Spirit

- 25" x 18" (640 X 460 mm) working area
- 60 IPS high working speed
- Patented SmartACT™ motion control technology innovation to reduce ramping and shorten running time
- Plug-and-play standard USB port for rapid data transmission
- Closed-loop DC servo motor for precise movement of laser carriage
- Patented SmartGUARD™ fire alarm device to provide maximum operation safety
- Pass-through front and rear doors to accommodate long working pieces
- TrueImage (patent pending) features to assure homogeneous engraving output



GCC Headquarters 4F-1., No.236, Fude 2nd Rd., Xizhi Dist., New Taipei City 22151, Taiwan 886-2-6616-6692 Fax : 886-2-2694-6875
 GCC China No.1, Chen Feng Road, Yushan, Kunshan, Jiangsu 215300, China 86-512-5726-1515 Fax : 86-512-5726-1518
 GCC Europe B.V. Eglantierbaan 43-45, 2908 LV, Capelle a/d IJssel, The Netherlands 31-10-458-9367 Fax : 31-10-451-9874
 GCC America, Inc 323 Paseo Tesoro, Walnut, CA 91789, USA 1-909-718-0248 Fax : 1-909-718-0251
 US & Canada Only Toll Free: 1-888-284-5211



Laser Engraver

GCC LaserPro Spirit



GCC LaserPro Spirit

GCC LaserPro Spirit is designed with the operator in mind and carrying various innovative features, reliable mechanics, and excellent output quality. GCC LaserPro Spirit is the missing piece in your operations puzzle, putting you on track for continued growth in your engraving and cutting business!

Reliable Motion System

Systematic and reliable motion system embedded with strong mechanical framework and accurate servomotor control technology to deliver superb output quality under rapid movement.



Pass-through Front and Rear Doors

Convenient front and rear door design enables loading of extremely long working pieces.



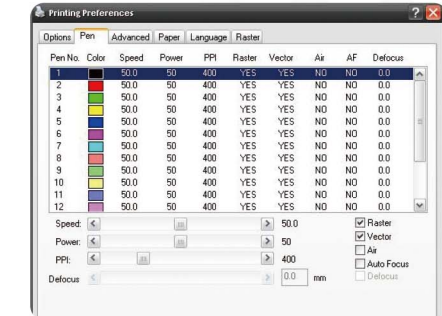
SmartACT™ (Patented)

Ground-breaking technology that reduces the ramping process, the job running time, which translates into higher productivity.



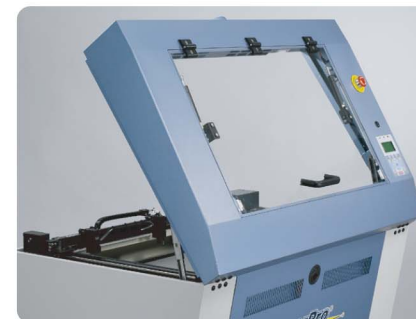
Innovative Software Features

Various user friendly features such as SmartCENTER, Defocus by pen, allows users to reduce set up time and make easy adjustments to achieve marvelous output quality.



SmartPIN AutoFocus

The plug-and-play probe design makes focusing a one-touch process and provides the accuracy and precision required for optimum quality in the lasing process.



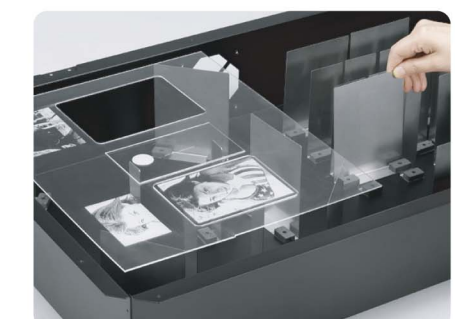
SmartLID™

An innovative lid that opens from both ends allowing easier access for daily maintenance.



Emergency Stop

Big red button located on the top of the machine allows operators to stop the laser and the motion carriage immediately to provide a highly safe operational environment.



SmartBOX™ (Optional)

An innovative technology that integrates the ventilation box with a honeycomb table. The result is not only a precise cut with sharp edges, but also a clean laser table to work on.