

Optional Items



Laser Engraver

GCC LaserPro Spirit

Ingenious and Versatile Designs

Specification	Spirit	
Work Area	640 x 460 mm (25 x 18 in.) Extendable to 740 x 460 mm (29 x 18 in.)	
Max. Part Size (L x W x H)	All doors closed	762 x 482.6 x 165 mm (30 x 19 x 6.5 in.)
	All doors open	762 x ∞ x 165 mm (30 x ∞ x 6.5 in.)
Dimensions (W x D x H)	1125 x 720 x 1005 mm (44.3 x 28.3 x 39.6 in.)	
Laser Source	12 to 100W 10.6-μm sealed CO ₂ Laser / 20W & 60W 9.3-μm sealed CO ₂ Laser	
Cooling	Air-cooled, Operating environment temperature 15°- 30°C (60°- 86°F)	
Drive	Closed-loop DC Servo Control	
Speed Control	Adjustable from 0.1-100% of 60 ips (Up to 16 color-linked speed settings per job)	
Power Control	Adjustable from 1-100% (Up to 16 color-linked power settings per job)	
Engraving Capability	256-level gray scale image processing capability	
Distance Accuracy	0.254 mm or 0.1% of move, whichever is greater	
Z-Axis Movement	Automatic	
Focus Lens	Standard 2.0", optional 1.5", 2.5", & 4.0" available	
Resolution (DPI)	Available 125, 250, 300, 380, 500, 600, 760, 1000, 1500	
Interface	10 Base-T Ethernet USB Type-A 2.0 – For USB storage (Max. 32GB capacity, FAT file system) USB Type-B 2.0 – For connecting with the computer	
Compatible Operating Systems	MS Windows	
Display Panel	4-line LCD display showing current file name, total working time, laser power, engraving speed, file(s) loaded into memory buffer, setup and diagnostic menus	
Safety	Class I Laser Product Compliant with EN60825, Class II Laser Product Compliant with CDRH 2006/42/EC Machinery Directive Compliance Class 4 Laser Product Compliant with CDRH with the optional pass-through door module	
Operation Voltage	Laser below 80Watt, 100-240VAC, 50-60Hz Auto Switching, Max. 15A Laser 80Watt and above, 200-240VAC, 50-60Hz, Max. 15A	
Fume Extraction System	External exhaust system with minimum flow rate 640m ³ /h (CFM 377 ft ³ /min) is required, 2.3kPa negative pressure (Pure-Air PA-1000FS @ 4" exhaust port)	

* Speed does not equal to throughput. See dealer or visit www.GCCworld.com for more details.

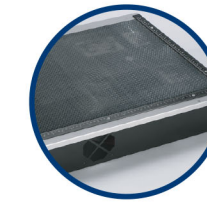
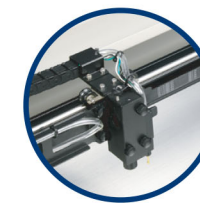
△ Specifications are subject to change without prior notice.

***Please use certified brands by GCC for LaserPro USB storage, kindly refer to GCC User Manuals for more details.

Authorized Dealer



www.GCCworld.com

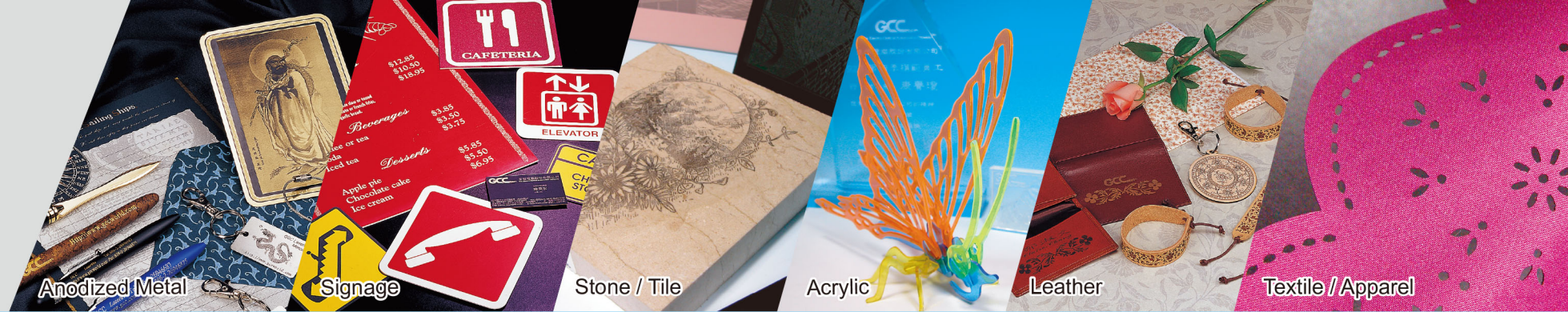


Spirit

- 640 x 460 mm (25 x 18 in.) working area
- 60 IPS high working speed
- Patented SmartACT™ motion control technology innovation to reduce ramping and shorten running time
- Plug-and-play standard USB port for rapid data transmission
- Closed-loop DC servo motor for precise movement of laser carriage
- Patented SmartGUARD™ fire alarm device to provide maximum operation safety
- Pass-through front and rear doors to accommodate long working pieces (optional)
- TrueImage (patented) features to assure homogeneous engraving output



GCC Headquarters 4F-1., No.236, Fude 2nd Rd., Xizhi Dist., New Taipei City 22151, Taiwan 886-2-6616-6692 Fax : 886-2-2694-6875
 GCC China No.1, Chen Feng Road, Yushan, Kunshan, Jiangsu 215300, China 86-512-5726-1515 Fax : 86-512-5726-1518
 GCC Europe B.V. Eglantierbaan 43-45, 2908 LV, Capelle a/d IJssel, The Netherlands 31-10-458-9367
 GCC America, Inc 20550 Carrey Road, Walnut, CA 91789, USA 1-909-718-0248 Fax : 1-909-718-0251
 US & Canada Only Toll Free: 1-888-284-5211



Laser Engraver

GCC LaserPro Spirit

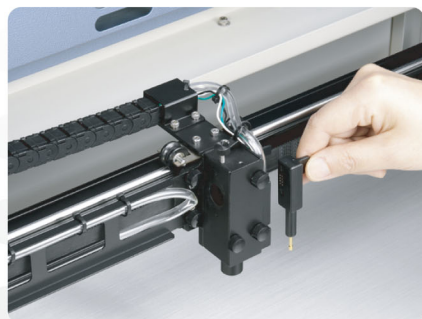
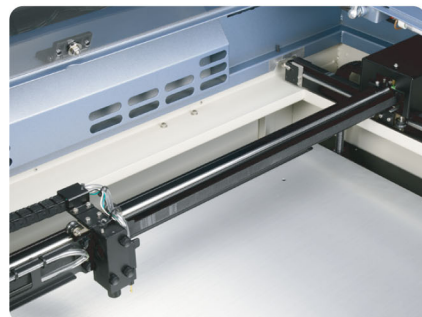


GCC LaserPro Spirit

GCC LaserPro Spirit is designed with the operator in mind and carrying various innovative features, reliable mechanics, and excellent output quality. GCC LaserPro Spirit is the missing piece in your operations puzzle, putting you on track for continued growth in your engraving and cutting business!

DuraGuide Motion Design

Systematic and reliable motion system embedded with strong mechanical framework and accurate servomotor control technology to deliver superb output quality under rapid movement.

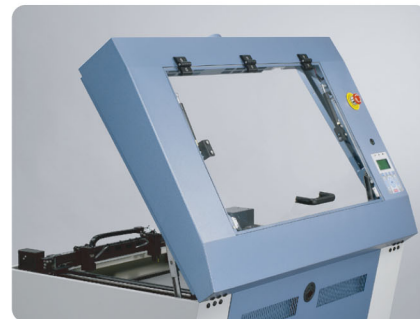
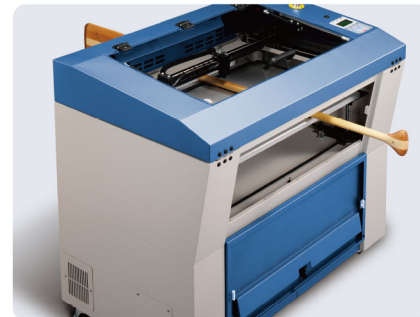


SmartPIN AutoFocus (Patented)

The plug-and-play probe design makes focusing a one-touch process and provides the accuracy and precision required for optimum quality in the lasing process.

Pass-through Front & Rear Doors (Optional)

Optional front and rear door open design enables loading of extremely long working pieces with ease and extends business flexibility.

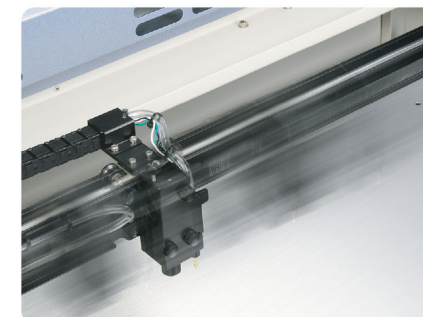


SmartLID™ (Patented)

An innovative lid that opens from both ends allowing easier access for daily maintenance.

SmartACT™ (Patented)

Ground-breaking technology that reduces the ramping process, the job running time, which translates into higher productivity.

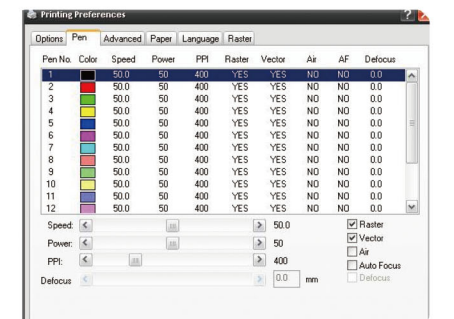


Key Switch & Emergency Stop

Key switch safeguards the machine from unauthorized use. Prominent emergency button located on the top of the machine allows operators to stop the laser and the motion carriage immediately to provide a safe operating environment.

Intuitive Control Panel Interface

A control panel with coherent hot-key design and graphical icon displays that allows you to change laser parameter settings, set jobs to repeat unlimited times, queue jobs, delete jobs, and more.



Innovative Software Features

Various user friendly features such as SmartCENTER, Defocus by pen, allows users to reduce set up time and make easy adjustments to achieve marvelous output quality.