

## Optional Items

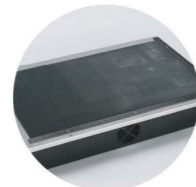
26500926G(07)



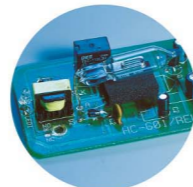
Pass-through Door Switch Module



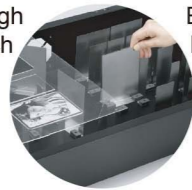
External Control Interface Board



SmartBOX™



SmartGUARD™ Fire Alarm (Patented)



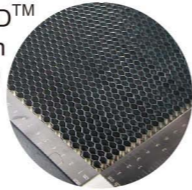
SmartBOX™ Cutting Accessory



Air Compressor Unit



Fume Extraction System



Honeycomb Table



Laser Cutter

# GCC LaserPro X380

Professional Cutting Performance at The Best Value

Specification		X380RX
Laser Source		80W, 100W Sealed CO <sub>2</sub> Laser
Laser Cooling		Water Cool
Working Area		38 x 24 in. ( 960 x 610 mm )
Max. Part Size (L x W x H)	All doors closed	41 x 25 x 6.5 in. ( 1041 x 635 x 165 mm )
	All doors open	41 x ∞ x 6.5 in. ( 1041 x ∞ x 165 mm )
Table Size		42.7 x 29.5 in. ( 1085 x 750 mm )
Dimensions		70.8 x 42.9 x 40 in. (1800 x 1092 x 1017 mm)
Driving Motor		Closed-loop DC servo control
Maximum Cutting Speed*		40 IPS
Speed Control		Adjustable from 0.1~100% ( Up to 16 color-linked speed settings per job )
Power Control		Adjustable from 0~100% ( Up to 16 color-linked speed settings per job )
Engraving Capability		256-level gray scale image processing capability
Distance Accuracy		0.254 mm or 0.1% of move, whichever is greater
Resolution (DPI)		Available 125, 250, 500, 1000
Z-Axis Movement		Automatic
Focus Lens		Standard 2.0", Optional 1.5", 3"
Computer Interface		Standard printer port and 2.0 USB Port
Compatible Operating Systems		MS Windows
Safety		Class I Laser Product Compliant with EN60825, Class II Laser Product Compliant with CDRH, 2006/42/EC Machinery Directive Compliance Class 4 Laser Product Compliant with CDRH with the optional pass-through door module
Operation Voltage		200-240VAC, 50/60Hz Auto Switching, MAX. 8A.
Power Consumption		1540W
Water Chiller		External water chiller required
Fume Extraction System		External exhaust system with minimum flow rate 800m <sup>3</sup> /h (CFM 471 ft <sup>3</sup> /h) is required, 2.3kPA negative pressure (Pure-Air PA-1500FS @ 4" & 8" exhaust port)

\* Speed does not equal to throughput. See dealer or visit [www.GCCworld.com](http://www.GCCworld.com) for more details.

△ Specifications are subject to change without prior notice.

Authorized Dealer



[www.GCCworld.com](http://www.GCCworld.com)

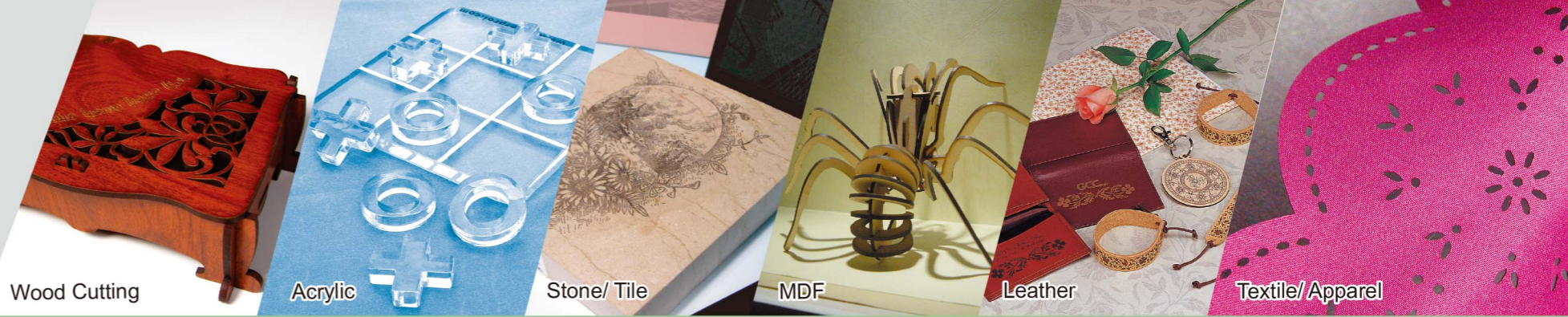


## X380

- 38" x 24" (960 x 610 mm) working area
- Closed-loop DC servo control for precise and rapid movement of the laser carriage
- X380RX model for versatile cutting and engraving applications
- Reliable DC excited CO<sub>2</sub> laser
- Pass-through doors for cutting of oversized objects
- Uniquely innovative user - friendly features



GCC Headquarters 4F-1., No.236, Fude 2nd Rd., Xizhi Dist., New Taipei City 22151, Taiwan 886-2-6616-6692 Fax : 886-2-2694-6875  
 GCC China No.1, Chen Feng Road, Yushan, Kunshan, Jiangsu 215300, China 86-512-5726-1515 Fax : 86-512-5726-1518  
 GCC Europe B.V. Eglantierbaan 43-45, 2908 LV, Capelle a/d IJssel, The Netherlands 31-10-458-9367  
 GCC America, Inc 20453 E Valley Blvd. Walnut, CA 91789, USA 1-909-718-0248 Fax : 1-909-718-0251  
 US & Canada Only Toll Free: 1-888-284-5211



Laser Cutter

# GCC LaserPro X380



## GCC LaserPro X380

The GCC LaserPro X series offers an economical alternative for laser cutting and engraving. The GCC LaserPro X380 series is equipped with dependable sealed CO<sub>2</sub> laser which offers a reliable source of laser power for mass production requirements. GCC LaserPro users always have an edge over the others with numerous uniquely innovative and user friendly features.

### Easy-to-use Control Panel

Designed for simplifying complex tasks, the GCC LaserPro X380's user-friendly interface is a great facilitator to provide powerful function settings.

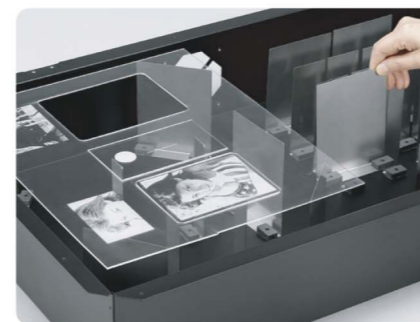


### Programmable Origin

Easy-to-use position modes allow the operator an effortless way to setup a job with Drag-N-Engrave. Repetitive workflows can be drastically simplified by relocating the origin position to any desired location.

### Emergency Stop

Big red button located on the top of the machine allows operators to stop the laser and the motion carriage immediately to provide a highly safe operational environment.

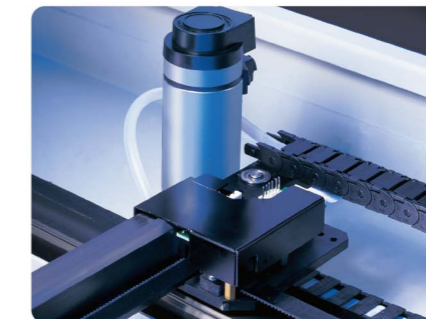


### SmartBOX™ (Optional)

This innovative design is composed of a ventilation box, a honeycomb table and easily rearrangeable magnetic supporting pieces. The SmartBOX™ provides great cutting quality and remarkably enhances air extraction.

### Motion System with DC Servo Motor

The GCC LaserPro X380 utilizes a high speed closed-loop DC servo motor for precise and fast carriage movement to ensure exceptionally accurate cutting outputs.



### Pass-Through Front and Rear Doors (Optional)

Optional front and rear door design enables operators to load extremely long working pieces.

### AutoFocus (Patented)

Patented AutoFocus adjusts the laser engraver to the precise focal point on the engraving area automatically. The AutoFocus is the most effective lens-focusing tool that prevents human error.



### Superb Cutting Quality

As a transcendent professional laser cutting system, the GCC LaserPro X380 is capable of various cutting applications and able to yield excellent cutting edges.