

Optional Items

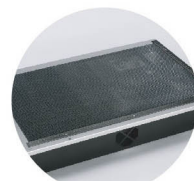
26500926G(07)



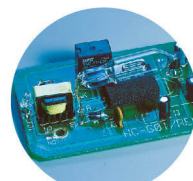
Pass-through Door Switch Module



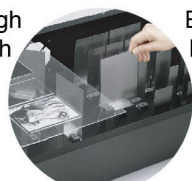
External Control Interface Board



SmartBOX™



SmartGUARD™ Fire Alarm (Patented)



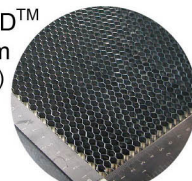
SmartBOX™ Cutting Accessory



Air Compressor Unit



Fume Extraction System



Honeycomb Table



Laser Cutter

GCC LaserPro X380

Professional Cutting Performance at The Best Value



X380

Specification		X380RX
Laser Source		80W, 100W Sealed CO ₂ Laser
Laser Cooling		Water Cool
Working Area		38 x 24 in. (960 x 610 mm)
Max. Part Size (L x W x H)	All doors closed	41 x 25 x 6.5 in. (1041 x 635 x 165 mm)
	All doors open	41 x ∞ x 6.5 in. (1041 x ∞ x 165 mm)
Table Size		42.7 x 29.5 in. (1085 x 750 mm)
Dimensions		70.8 x 42.9 x 40 in. (1800 x 1092 x 1017 mm)
Driving Motor		Closed-loop DC servo control
Maximum Cutting Speed*		40 IPS
Speed Control		Adjustable from 0.1~100% (Up to 16 color-linked speed settings per job)
Power Control		Adjustable from 0~100% (Up to 16 color-linked speed settings per job)
Engraving Capability		256-level gray scale image processing capability
Distance Accuracy		0.254 mm or 0.1% of move, whichever is greater
Resolution (DPI)		Available 125, 250, 500, 1000
Z-Axis Movement		Automatic
Focus Lens		Standard 2.0", Optional 1.5", 3"
Interface		10 Base-T Ethernet USB Type-A 2.0 – For USB storage (Max. 32GB capacity, FAT file system) USB Type-B 2.0 – For connecting with the computer
Compatible Operating Systems		MS Windows
Safety		Class I Laser Product Compliant with EN60825, Class II Laser Product Compliant with CDRH, 2006/42/EC Machinery Directive Compliance Class 4 Laser Product Compliant with CDRH with the optional pass-through door module
Operation Voltage		200-240VAC, 50/60Hz Auto Switching, MAX. 8A.
Power Consumption		1540W
Water Chiller		External water chiller required
Fume Extraction System		External exhaust system with minimum flow rate 800m ³ /h (CFM 471 ft ³ /h) is required, 2.3kPA negative pressure (Pure-Air PA-1500FS @ 4" & 8" exhaust port)

* Speed does not equal to throughput. See dealer or visit www.GCCworld.com for more details.

△ Specifications are subject to change without prior notice.

*** Please use certified brands by GCC for LaserPro USB storage, kindly refer to GCC User Manuals for more details.

Authorized Dealer

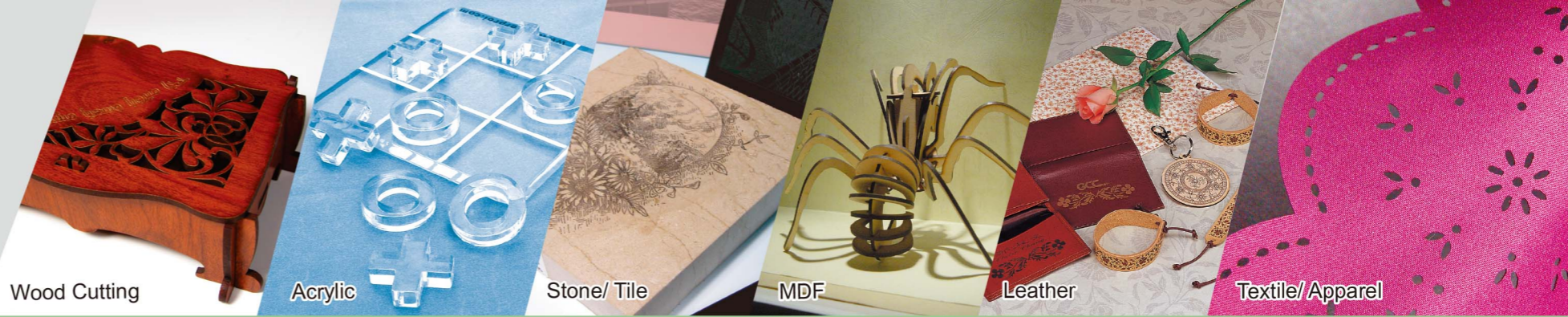


www.GCCworld.com

- 38" x 24" (960 x 610 mm) working area
- Closed-loop DC servo control for precise and rapid movement of the laser carriage
- X380RX model for versatile cutting and engraving applications
- Reliable DC excited CO₂ laser
- Pass-through doors for cutting of oversized objects
- Uniquely innovative user - friendly features



GCC Headquarters 4F-1., No.236, Fude 2nd Rd., Xizhi Dist., New Taipei City 22151, Taiwan 886-2-6616-6692 Fax : 886-2-2694-6875
 GCC China No.1, Chen Feng Road, Yushan, Kunshan, Jiangsu 215300, China 86-512-5726-1515 Fax : 86-512-5726-1518
 GCC Europe B.V. Eglantierbaan 43-45, 2908 LV, Capelle a/d IJssel, The Netherlands 31-10-458-9367
 GCC America, Inc 20453 E Valley Blvd. Walnut, CA 91789, USA 1-909-718-0248 Fax : 1-909-718-0251
 US & Canada Only Toll Free: 1-888-284-5211



Laser Cutter

GCC LaserPro X380



GCC LaserPro X380

The GCC LaserPro X series offers an economical alternative for laser cutting and engraving. The GCC LaserPro X380 series is equipped with dependable sealed CO₂ laser which offers a reliable source of laser power for mass production requirements. GCC LaserPro users always have an edge over the others with numerous uniquely innovative and user friendly features.

Easy-to-use Control Panel

Designed for simplifying complex tasks, the GCC LaserPro X380's user-friendly interface is a great facilitator to provide powerful function settings.

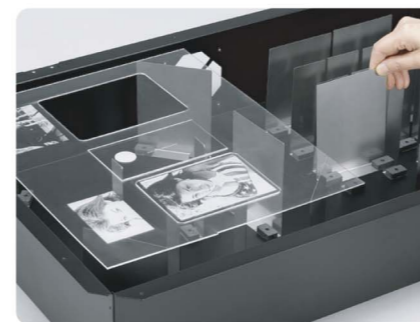


Programmable Origin

Easy-to-use position modes allow the operator an effortless way to setup a job with Drag-N-Engrave. Repetitive workflows can be drastically simplified by relocating the origin position to any desired location.

Emergency Stop

Big red button located on the top of the machine allows operators to stop the laser and the motion carriage immediately to provide a highly safe operational environment.



SmartBOX™ (Optional)

This innovative design is composed of a ventilation box, a honeycomb table and easily rearrangeable magnetic supporting pieces. The SmartBOX™ provides great cutting quality and remarkably enhances air extraction.

Motion System with DC Servo Motor

The GCC LaserPro X380 utilizes a high speed closed-loop DC servo motor for precise and fast carriage movement to ensure exceptionally accurate cutting outputs.



Pass-Through Front and Rear Doors (Optional)

Optional front and rear door design enables operators to load extremely long working pieces.

AutoFocus (Patented)

Patented AutoFocus adjusts the laser engraver to the precise focal point on the engraving area automatically. The AutoFocus is the most effective lens-focusing tool that prevents human error.



Superb Cutting Quality

As a transcendent professional laser cutting system, the GCC LaserPro X380 is capable of various cutting applications and able to yield excellent cutting edges.